



洗衣王
E&B

EASY & BEST SOLUTIONS

We propose a new way of working, aimed at achieving the best solution in the easiest way possible.

Just let us know your production requirements. We will take care of the rest.

本公司銷售之商品均有富邦3000萬產品責任險



洗衣王國際有限公司
CE King International Co., Ltd.

統編:28209917

No.609-15, Xinsu Rd., Xinzhuang Dist., New Taipei City 242, Taiwan (R.O.C.)

0800-202-112 0910-32-3399

www.ceking.net www.facebook.com/cekingclub



CEKING MIT
COIN OPERATED LAUNDRY



超會賺錢的智慧洗衣機器人
LAUNDRY ROBOT

WASHER EXTRACTORS
SUSTAINABLE WASHING
FOR PROFESSIONALS



LAUNDRY EQUIPMENT

www.1741.tw

www.ceking.net

洗衣王 嚴選洗衣機器人

LAUNDRY ROBOT

CEW SERIES WASHER EXTRACTORS SUSTAINABLE WASHING FOR PROFESSIONALS



洗滌效果來自豐富的經驗與技術 大容量、高運轉、澎湃洗淨 QUALITY AND EFFICIENCY BASED ON EXPERIENCE

- +** **DURABILITY 工業及結構超耐用**
The sturdy build of Ceking's washing machines means:
• They have a long working life and are virtually maintenance free.
- **PRODUCTIVITY 高效能穩定洗程 防呆不當機**
It is possible to adjust each washing parameter to suit the precise needs of each load (thereby saving time), as well as the stability in the process, which prevents unplanned stoppages, thus significantly increasing productivity.
- **WATER AND ENERGY CONSUMPTION 智慧省水 & 省電**
Patented water-saving design to effectiveness give low water level washing.
- +** **SAFETY 沉穩安全**
Ceking's washing machines have double safety features. The machine is only active if a closed door and locked door have been validated. In each washing cycle the system checks the dual status (open/closed) of the safety controls.
- C** **PROXIMITY 用心服務**
Ceking's extensive commercial and technical network around the world allows it to provide a permanent advice and follow up service directly, plus a quick and efficient technical response, with original spare parts.
- C** **EXPERIENCE 完美洗衣整合**
We pass on the know-how we acquire to our clients when defining the laundry project suited to their needs, with the continuous advice and training provided by the Ceking Laundry Tips service.
This is how we achieve Easy & Best Solutions.

呵護如同手洗 PAMPERING THE FABRIC, TAKING CARE OF YOUR SKIN



For generations our mothers and grandmothers washed their linen in rivers or wash houses.

• Ceking maintains the philosophy and wisdom of these generations: intensity, but with the care of one that appreciates each garment.

WASHER EXTRACTORS SUSTAINABLE WASHING FOR PROFESSIONALS

Washer Specification

Product Model	CEW-09c	CEW-12c	CEW-18c	CEW-22c	CEW-25c
Laoding Ratio	1 : 8.5	1 : 8.5	1 : 8.5	1 : 8.5	1 : 8.5
Washing Capacity (KG) (lb)	11.3 25	13.6 30	18.2 40	22.7 50	27.2 60
Drum Diameter (mm)	530	650	650	800	800
Drum Depth (mm)	410	360	550	434	520
Drum Volume (litres)	90	120	180	218	261
Motor Size (hp/kw)	2 / 1.5	3 / 2.25	3 / 2.25	5	7.5
Frequency (Hz)	50	50	50	50	50
Voltage (Phase x V)	1x230V	1x230V	1x230V	1x230V	1x230V
Speed					
- Wash (RPM)	40	40	40	45	45
- Intermediate Extract (RPM)	550	550	550	700	700
- High Extract (RPM)	600	600	600	850	850
G - Force (G)	105	100	100	218	218
Drain Out Diameter (mm/in)	57 / 2 1/2	57 / 2 1/2	57 / 2 1/2	57	57
Cold Water Inlet Dia. (mm/in)	19 / 3/4	19 / 3/4	19 / 3/4	25	25
Hot Water Inlet Dia. (mm/in)	19 / 3/4	19 / 3/4	19 / 3/4	25	25
Steam Inlet Dia. (mm/in)	-	-	-	12	12
Belt Specification	3V-600	3V-710	3V-710	3V-750	3V-750
Cabinet Height (mm)	1150	1300	1300	1650	1650
Cabinet Width (mm)	780	920	920	1150	1150
Cabinet Depth (mm)	823	770	960	1050	1210
Net Weight (KG)	316	382	400	915	1000
Shipping Dimensions					
Height (mm)	1380	1500	1500		
Width (mm)	100	120	120		
Depth (mm)	100	100	120		
Shipping Weight (KG)	330	405	410	1025	1120

以上規格·製造商保有更改權力·一律以實際機體為準

**Available in varied colour .

**Agency approvals may vary depending on configuration . Consult factory for details.

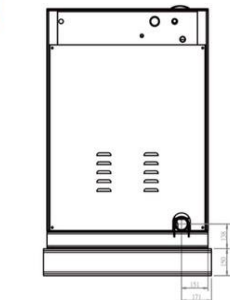
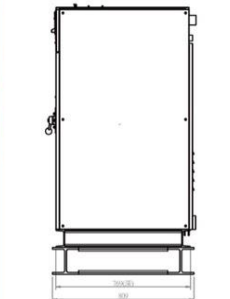
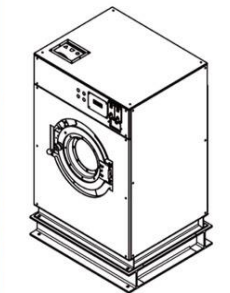
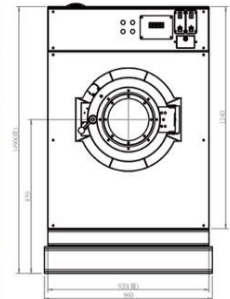
**For the most accurate information , please consult machine installation guide for design and construction purposes .

****Due to continuous product improvements , design and specifications subject to change.

Ceking Coin Laundry System MIT 台灣品質固若基石

Washer Dimension

Example for CEW-14(C)





CEKING COIN LAUNDRY

商用烘衣機系列

- 高效能工作機
- 最低噪音
- 最大容量
- 最耐操耐用
- 數百台實機案例

打造專屬開店設備，創業成功好幫手

電熱·瓦斯·蒸氣烘乾
 日趨取現台灣製造，成功案例超過千台

日本設計·台灣製造
 開門立即停止運轉，隨時檢視衣物是否已乾

隨開即關·安全防護
 保費容易，清潔快速，穩定熱源，安全可靠

結構簡約·恆溫加熱
 不易壞機，日久彌新，阻絕熱源，美觀大方

特殊防鏽·粉彩烤漆
 正轉反轉，平均受熱，效能絕佳，面面俱到

雙向烘乾·效能加倍
 15KG 23KG 26KG 超大容量，消除靜電，不易皺折

超大容量·智慧冷風



精·簡·幹·鍊
小·易·淨·實
扎·操·俐·耐
實·作·落·操

三大保證

- 1 堅固耐用
- 2 超低故障
- 3 品質堅持



THE ADVANTAGES : flexible electronic control on "Drying time", "Cooling time", and "Temperature setting". New streamline design on the electronic control panel and lower anti-impact bar. Enlarged loading door for the convenience of unloading and reloading. Simple and easy for the cleaning of drying deposits by opening the lower front door during none operation time.



產品特色

- 簡約造型獨立機電操作面板
- 獨家設計熱循環系統
- 電子系統加熱/溫度/冷風定時調整
- 獨家鋼性機體底盤結構
- 超大內桶口徑弧形衣物好整理
- 簡易門把設計輕鬆好開關

規格標準 / Coin system

產品型號/Model no.	CEDG-15(C)	CEDG(s)-15	CEDG(s)-23
烘乾容量/ Drying capacity(1:20)	15KG 35(lb)	15KG 35(lb)	23KG 50(lb)
內桶尺寸/ Drum dim.DxH (mm)	φ 710x710	φ 710x780	φ 950x730
內桶容積/ Volume (公升 / L)	281	281 / 303	393 / 475
操作門直徑/ Door dia.(mm)	φ 572	φ 670	φ 820
主軸馬達規格/ Basket motor (HP)	1/2	1/4	1/2
風車馬達規格/ Exhaust motor (HP)	1/2	1/4	1/2
排風口徑/ Exhaust dia. (in)	φ 6"	φ 6"	φ 8"
能源	瓦斯 Gas 電熱 Electric		
	φ 1/2" 12kw	3/8 12kw	3/8 18kw
前主軸軸承/ Front bearing	UCF206	UCF206	UCF208
後主軸軸承/ Rear bearing	UKP207	UKP207	UKP209
烘乾轉速/ Basket speed (RPM)	39	40	40
電源/電壓(V) Power supply	216-240 50Hz 1 or 3 ph	216-240 50Hz 1 or 3 ph	216-240 50Hz 1 or 3 ph
機尺寸			
寬 (W)	756	760	107
深 (D)	1065	190	205
高 (H)	1535	120	125
淨重/ Net weight (KG)	320	395	450

以上規格，製造商保有更改權力，一律以實際機體為準

完整 MIT 設計製造

Ceking Dryer 100% 採台灣生產製造，在台已經有數百家傳統洗衣店及工廠使用，是一台高效能且穩定度極高之Made Taiwan機器。

產品優點 Made in Taiwan

- 維修成本超低
- 零件耗材便宜
- 耗材永不缺料
- 維修保固快速

Eco Wash EWR-25.30.40.60

25/30/40/60-lb. Capacity Rigid Mount/ 200 G-Force Coin Washer/Extractor

Features and Benefits:

- Coin or Card Ready
- Inverter Driven Motor
- Heavy-Duty Structural Tube Construction
- Stainless Steel Cabinet
- Easy to Program and Easy to Use Controls
- Load Imbalance Detection Before Spinning
- Large, Convenient Supply Dispenser
- Flexible Water Level Settings
- Ergonomic, Easy-Grip Door Handle
- 10/5 Year Limited Warranty*



EWR-25 Coin Washer/Extractor



Why Purchase ADC EcoWash?

Rugged Structural Tube Construction

EcoWash rapid spin washer/extractors are constructed with a structural tube design frame in combination with a heavy-duty cast aluminum counter weight to provide superior strength and maximum stability throughout the wash cycle.

Durable Door Safety Lock and Handle

The durable ergonomic design of the door handle combined with our Easy Lock™ door lock provides maximum convenience and safety.

Large, Convenient Supply Dispenser

Easy to use, this large supply dispenser allows you to conveniently load your detergent, bleach and fabric softeners before starting your wash cycle.

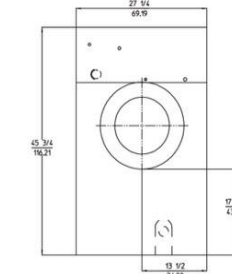
Your local ADC independent authorized distributor



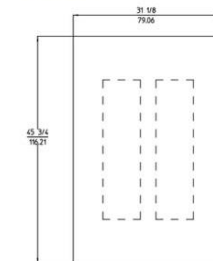
Eco Wash EWR-25.30.40.60

200 G-Force Rapid Spin Washer-Extractor				
Features	EWR-25	EWR-30	EWR-40	EWR-60
DRUM				
Load Capacity (lb/kg)	25 / 11.3	30 lb / 13.60 kg	40 lb / 18 kg	60 lb / 25 kg
Drum Volume (cu. ft./liter)	3.53 / 100	4.6 cuft / 130 L	6.35 cu ft / 180 L	8.82 cuft / 250 L
Drum Diameter (in/cm)	21 / 53.34	24-1/2" / 62.23 cm	24-1/2" / 62.23 cm	27-9/16" / 70.00 cm
Drum Depth (in/cm)	16-3/4 / 42.55	17" / 43.18 cm	22-13/16" / 58 cm	26-3/8" / 67 cm
DIMENSIONS				
Width (in/cm)	27-1/4 / 69.22	31-1/8" / 79.06 cm	31-1/8" / 79.06 cm	34-3/4" / 88.27 cm
Depth (in/cm)	31-1/8 / 79.06	34-1/4" / 86.1 cm	38" / 96.52 cm	41-5/8" / 105.73 cm
Height (in/cm)	45-3/4 / 116.21	51-3/16" / 130.02 cm	51-3/4" / 131.45 cm	55-1/2" / 140.97 cm
Weight (lb/Kg)	458 / 207.75	486 lb / 220.45 kg	542 lb / 245.85 kg	705 lb / 319.78 kg
DIMENSIONS WITH PACKAGING				
Crated Width (in/cm)	29-1/8 / 73.98	32-1/2" / 82.55 cm	32-1/2" / 82.55 cm	36-1/2" / 92.71 cm
Crated Depth (in/cm)	38-1/8 / 96.84	39" / 99.06 cm	45" / 114.30 cm	49" / 124.46 cm
Crated Height (in/cm)	53-3/4 / 136.53	60-1/4" / 153.04 cm	61-1/4" / 155.58 cm	64-1/2" / 163.83 cm
Crated Weight (lb/Kg)	488 / 221.35	536 lb / 243.13 kg	592 lb / 268.53 kg	765 lb / 347.00 kg
DOOR				
Height to Bottom of Door (in/cm)	16-1/2 / 41.91	16-3/4" / 42.55 cm	16-1/2" / 41.91 cm	19" / 483
Door Opening Diameter (in/cm)	11-1/2 / 29.21	14-3/4" / 37.47 cm	14-3/4" / 37.47 cm	14-3/4" / 375
POWER				
Motor	0.75 kW	1 kW	2.2 kW	3 kW
Heating (Electric Heated Model)	6 kW	9 kW	12 kW	18 kW
Maximum Power (Electric Version)	6.75 kW	10 kW	14.2 kW	21 kW
CONNECTIONS				
Water Inlet (in/cm)	3/4 / 1.91	3/4" / 19.05 cm	3/4" / 19.05 cm	3/4" / 19.05 cm
Drain (in/cm)	3 / 7.62	3" / 76.2 cm	3" / 76.2 cm	3" / 76.2 cm
CYLINDER SPEED				
Washing speed (r.p.m.)	50	50	50	47
Spinning speed (r.p.m.)	820	760	760	714
G-Force	200	200	200	200
FLOOR LOADING				
Static Floor Load	468 lb / 2,08 kN	506 lb / 2,25 kN	553 lb / 2,46 kN	678 lb / 3,2 kN
Dynamic Floor Load	112 lb / 0,5 kN	135 lb / 0,6 kN	202 lb / 0,9 kN	225 lb / 1 kN
Maximum Vertical Load	580 lb / 2,58 kN	641 lb / 2,85 kN	755 lb / 3,36 kN	944 lb / 4,2 kN
Dynamic Load Frequency (Hz)	12.2	12.2	11.7	11.7
G Factor	200	200	200	200
OPTION HEAT SOURCES				
Steam Inlet (in/cm)	1/2 / 1.27	1/2" / 1.27 cm	1/2" / 1.27 cm	1/2" / 1.27 cm
Electric	6 kW	9 kW	12 kW	18 kW

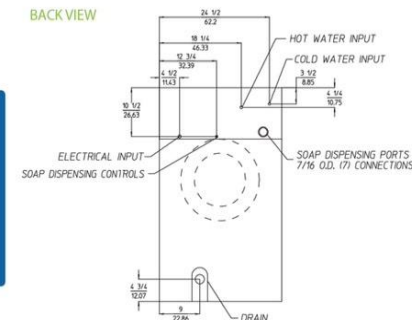
FRONT VIEW



SIDE VIEW



BACK VIEW





洗劑販賣機

COIN OPERATED DETERGENT VENDING MACHINE

Econ Friendly

Free Carbon Dioxide

Detergent Vending Machine

Single Slot



Energy Free

重量: 23kg

code: CES-1FT

Dimension W465xD225xH700mm

Detergent Vending Machine

Triple Slots



Energy Free

重量: 80kg

code: CES-3FT

Packaging Dimension W6.5xD2.9xH10cm

Dimension W61xD24xH100cm



Detergent Delivery Slots



Coin-in Slots mechanism



Turning Knob



EASY & BEST SOLUTIONS

We propose a new way of working, aimed at achieving the best solution in the easiest way possible.

Just let us know your production requirements. We will take care of the rest.

本公司所銷售之商品均有投保3000萬產品責任險



洗衣王國際有限公司

CE King International Co., Ltd.

統編: 28209917

No.609-15, Xinshu Rd., Xinzhuang Dist., New Taipei City 242, Taiwan (R.O.C.)

0800-202-112 0910-32-3399

www.ceking.net

www.facebook.com/cekingclub



洗衣王國際有限公司 0800-202-112 0910-32-3399 www.ceking.net

CE King International Co., Ltd. No.609-15, Xinshu Rd., Xinzhuang Dist., New Taipei City 242, Taiwan (R.O.C.)

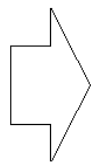


客戶別：

洗衣機	kg	
洗衣機	kg	
洗衣機	kg	
洗衣機	kg	
35磅 瓦斯烘乾機		
35磅 瓦斯烘乾機		
小金剛兌幣機		
六 / 三道販賣機		
回收桶 / 垃圾桶		
洗手台	頓水塔	
室內	加水站	

客戶確認

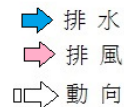
承辦業務：



洗衣機 kg = cm x 台
 洗衣機 kg = cm x 台
 洗衣機 kg = cm x 台
 洗衣機 kg = cm x 台
 烘乾機 35磅 = cm x 台
 烘乾機 35磅 = cm x 台 單位: cm

洗衣機 面寬約 cm 台約 cm(+3)
 烘乾機 面寬約 cm = 台約 cm(+2)

洗衣機 220V 單相 三相
 烘乾機 220V 單相 三相



kg 投幣洗衣機	20A		小金剛兌幣機 110V	座	
kg 投幣洗衣機	20A		摺衣台	組	
kg 投幣洗衣機	20A		洗手台	組	
kg 投幣洗衣機	30A			組	
kg 投幣烘衣機	30A		回收桶 / 垃圾桶	組	
kg 投幣烘衣機	30A			台	
				組	
六 / 三道販賣機	15A		人形室內加水站	台	

本圖僅供現場施工參考